

Before you Connect to New School WIFI (Windows)

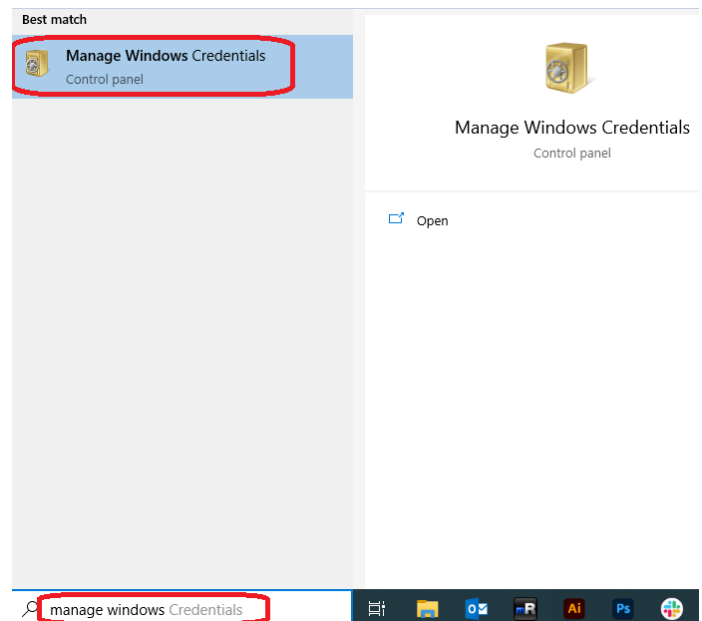
On 23rd Feb 3pm we will be resetting your Compass & Google account passwords. The new password will be the same for all systems (Compass & Google).

We are also changing the WIFI network that you connect to at school.

- Once your Student account password has been changed you will no longer be able to connect to LHS_STUDENTS WIFI
- You must Connect to **LHS_Unified** WIFI with your new login details at school

To ensure a smooth transition from old to new password please follow these steps on your Windows BYOD device:

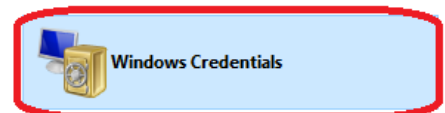
1. Go to Search box in bottom left hand corner and search for “Windows Credential Manager”



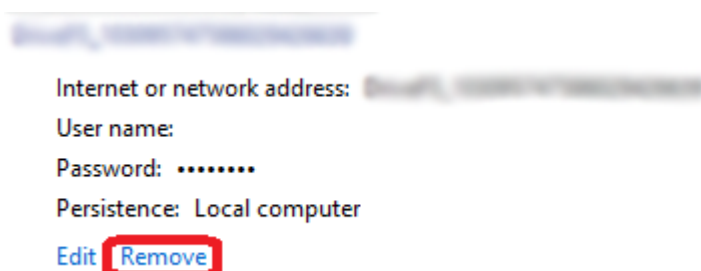
2. Click on “Windows Credentials”

Manage your credentials

View and delete your saved logon information for websites, connected applications and networks.



3. In the Windows Credentials
 - a. Search for the following items and delete them from the Credential Manager (If you can't find either you can skip this step)
 - i. 4PRT/LHS_STUDENT
 - ii. LHS_STUDENTS



Modified: Today

How to Connect To New WIFI

Please follow these instructions at home before you come to school

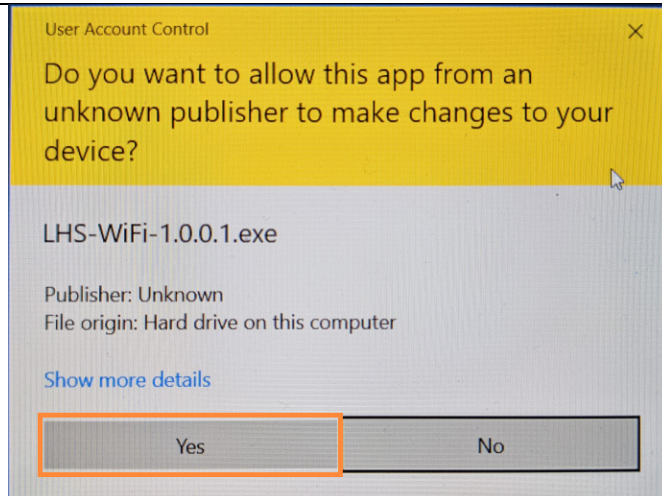
Download the configuration tool called "LHS-WiFi-1.0.0.1.exe" from this news article and run it. Or click the link to the right to download the configuration tool.

**** WARNING ****

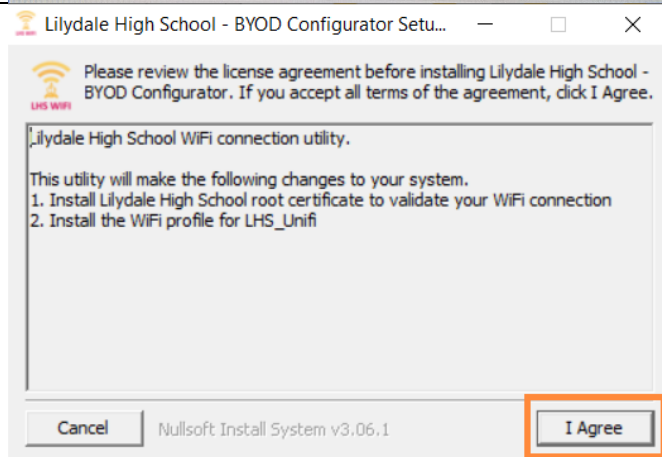
Your antivirus may detect this configuration software as a virus threat. It is safe to run & you can ignore.

[Configuration Tool](#)

Select "Yes".



Select "I Agree".



When completed select "Close".

